



EALE CONFERENCE 2024

Norwegian School of Economics

The 36th European Association
of Labour Economists Conference

5 - 7 SEPTEMBER 2024

PARTICIPANTS: 495

PRESENTATIONS: 421

NORWEGIAN SCHOOL OF ECONOMICS
BERGEN, NORWAY

NHH



EALÉ 2024
CONFERENCE 4

ORGANIZERS



Kjell G. Salvanes

*Professor at FAIR, Norwegian School of Economics
EALE President*



Katrine V. Løken

Professor at FAIR, Norwegian School of Economics



Aline Bütikofer

Professor at FAIR, Norwegian School of Economics



Alexander L.P. Willén

Professor at FAIR, Norwegian School of Economics

CONFERENCE OPENING

The Municipality of Bergen hosted the Conference Opening at the historical Håkon's Hall. Håkon's Hall is more than seven hundred and fifty years old and was built by King Håkon Håkonsson between 1247 and 1261 as a royal residence and feasting hall.

The Deputy Mayor of Bergen gave a warm welcome to all the visitors from Europe, USA and Australia.



Deputy Mayor of Bergen, Thomas Felsrud



Mingling and food



Entertainment: Thomas Valeur



Principal at NHH: Øystein Thøgersens



Outside the Håkon's Hall



**KEYNOTE
PRESENTATIONS**





Registration



Lunch Break



Lunch Break



Job Market Lunch

Parenting Styles, Social Norms and the Development of Risky Behaviors
D. Lambert¹, L. Mangioneke¹, L. Pizzoli², L. P. ...
¹University of North Wales, ²University of Exeter

PARALLEL AND POSTER SESSIONS

Over the three-day conference we had eight parallel sessions and three poster sessions, featuring about **420** presentations.



SPECIAL SESSION ON MENTAL HEALTH

On Saturday, September 7th, we introduced a special session on Mental Health, a new addition to the EALE program. Led by Professor Aline Bütikofer, the session focused on enhancing understanding of the mental health challenges faced by young people entering the labour market and explored strategies to support them effectively.

The session was sponsored by
the Fondazione Ing. Rodolfo Debenedetti.



Ana Rodríguez-González

Universitat de Barcelona, Spain

The Oral Contraceptive Pill and Adolescents' Mental Health



Michelle Acampora

Harvard Kennedy School, United States

Mental Health Literacy, Beliefs, and Demand for
Mental Health Support



Roger Prudon

National Bureau of Economic Research, United States

Treating the untreated: The long-term benefits of
(mental) health screening in high school



Sonia Bhalotra

Warwick University, United Kingdom

Adolescent antidepressant use and academic achievement



Local Organizers



Professor Katrine V. Løken



PhD Students



Registration



POLICY PANEL
**LABOUR SHORTAGE:
A PROBLEM EVERYWHERE?**



Barbara Kaufmann

Director for Employment and Social Governance, European Commission, DG EMPL



Stéphane Carcillo

Head of the Jobs and Income Division at the OECD



Tito Boeri

Professor at Bocconi University



Bernd Fitzenberger

*Director of the IAB
Professor at Friedrich-Alexander University*





AWARD CEREMONY

Federica Meluzzi | Young Labour Economists Prize

CREST (Institut Polytechnique de Paris), France

“The College Melting Pot:
Peers, Culture and Women’s Job Search”

Claudia Meza-Cuadra | Best Poster Award 2024

Universitat Pompeu Fabram, Barcelona, Spain

“Videogames and the Gender Gap in Computer Science”

Martin Biewen | Best Reviewer Prize 2024

Eberhard Karls Universität Tübingen, Germany

Jesse Wursten and Michael Reich | Labour Economists Prize 2024

KU Leuven, Belgium / University of California, Berkeley

“Racial Inequality in Frictional Labor Markets:
Evidence from Minimum Wages”

EXCURSIONS

EALE participants explored historical sites and nature during the conference with fellow friends and colleagues.

Bryggen is a UNESCO World Heritage site in Bergen, known for its colorful wooden buildings dating back to the Hanseatic era, offering a glimpse into the city's rich maritime history.

Bergenhus Fortress hold within their ancient stones over 750 years of history, with tales of kings and queens, governors, and hardened prisoners.

Fløyen is a popular hike and viewing point, accessible by the Fløibanen funicular, providing stunning panoramic views of Bergen and the surrounding fjords.



Bryggen | Photo Credit: Anna T. Takle



Fløyen | Photo Credit: floyen.no

CONFERENCE DINNER Grieghallen

The conference dinner was held at Grieghallen, which is Bergen's cultural grand hall. It's situated in the heart of Bergen, where they host some of the city's most spectacular events.







EALE SPONSORS

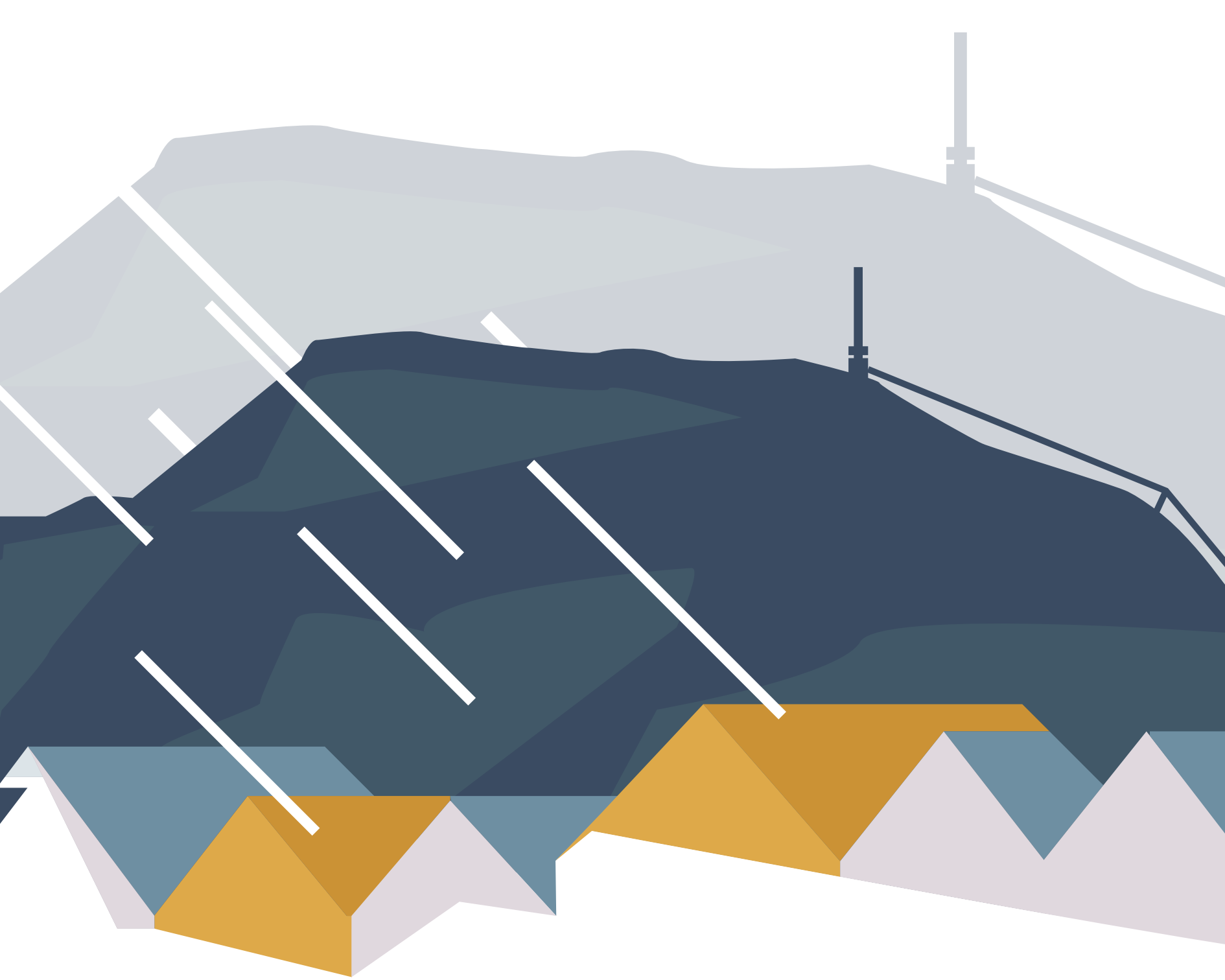


CITY OF
BERGEN

SNF NHH

mcEmpirics

FAIR Centre for Experimental Research
on Fairness, Inequality and Rationality



Helleveien 30, 5045 Bergen
fair.nhh.no | fair@nhh.no
nhh.no | sc@nhh.no